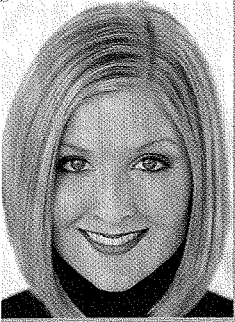


ILLINOIS **REAL ESTATE JOURNAL** *REjournals.com*

2009 Women in Real Estate



A supplement to the June issue
of Illinois Real Estate Journal



HOK
Meghan Wunderlich
 60 East Van Buren, 14th Floor
 Chicago, IL 60605
 Phone: 312.254.5455
 Fax: 312.782.6727
 meghan.wunderlich@hok.com
 www.hok.com

Meghan Wunderlich, Director of Business Development, leads marketing and new business development

efforts for HOK Chicago's Interiors Practice. She is a sales and marketing strategist with a diverse background. Over the course of her career, Meghan has gained experience from the manufacturer, dealer, end-user and A&D perspectives.

HOK is a global architectural firm that specializes in planning, design and delivery solutions for buildings and communities. With 24 offices worldwide, the firm serves diverse corporate, commercial, public and institutional clients. HOK is committed to leading the world toward sustainable communities and built environments.



I-39 Logistics Corridor Association
Janyce Fadden
 100 Park Avenue, Ste 100
 Rockford, IL 61101
 Phone: 815.987.8118, Ext. 114
 Fax: 815.987.8129
 jfadden@i-39logisticscorridor.com
 www.i-39logisticscorridor.com

Janyce holds dual roles as Executive Director of the I-39 Logistics Corridor

Association and as President of the Rockford Area Economic Development Council. During her career, she has served in executive positions at Danaher Corporation, Honeywell, General Signal, Applied Power, and Pacific Scientific. She holds a Bachelor of Science degree in Engineering and Management from Clarkson University and a Master of Business Administration degree from Northern Illinois University.

The association represents a 10,000 square-mile area from Janesville, WI, to Bloomington, IL. During the 2007-2008 period, the I-39 Logistics Corridor booked approximately 8,200,000 SF of new commercial development and leasing activity, representing an increase of 67% over the 2005-2006 period. The significant benefits of the 165-mile I-39 Logistics Corridor make it the ideal, highly accessible, low-cost location for business.



I-39 LOGISTICS CORRIDOR ASSOCIATION




Inland Real Estate Corporation
Carol Adams
 2901 Butterfiled Rd.
 Oak Brook, IL 60523
 Phone: 630.218.4968
 Fax: 630.218.7360
 adams@inlandrealestate.com
 www.inlandrealestate.com

Carol Adams joined the Inland Group of Companies in 1987 and has served as Chief Compliance Officer of

Inland Real Estate Corporation. Ms. Adams has also served as Treasurer of Inland Commercial Property Management, a subsidiary of Inland Real Estate Corporation since 1997. As Chief Compliance Officer and Treasurer, Ms. Adams oversees all aspects of property accounting as well as manages the Sarbanes Oxley efforts.

Inland Real Estate Corporation (NYSE: IRC), a real estate investment trust (REIT) that owns interests in 140 neighborhood, community, power and lifestyle retail centers and single-tenant properties aggregating more than 14 million square feet of leasable space primarily in the Midwest. Inland Real Estate Corporation is part of The Inland Group of Companies, Inc., which is comprised of a group of separate legal entities doing business nationwide.

 Inland Real Estate Corporation




Inland Real Estate Corporation
Dawn Benchelt
 2901 Butterfiled Rd.
 Oak Brook, IL 60523
 Phone: 630.218.7364
 Fax: 630.218.7357
 benchelt@inlandrealestate.com
 www.inlandrealestate.com

As Director of Investor Relations, Dawn Benchelt oversees and manages the investor relations function for

Inland Real Estate Corporation. Dawn's role is to educate the investment community about the company's goals, strategies, competitive position and performance. Dawn joined the company in August 2007 and has over ten years experience in various investor and public relations roles.

Inland Real Estate Corporation (NYSE: IRC), a real estate investment trust (REIT) that owns interests in 140 neighborhood, community, power and lifestyle retail centers and single-tenant properties aggregating more than 14 million square feet of leasable space primarily in the Midwest. Inland Real Estate Corporation is part of The Inland Group of Companies, Inc., which is comprised of a group of separate legal entities doing business nationwide.

 Inland Real Estate Corporation